



EMIS-MASS 260

Mass flowmeter

Straight current time measurement of mass and volumetric flow rate and density.

CORIOLIS
FLOWMETER



EMIS-MASS 260

U-type



EMIS-MASS 260

compact type



EMIS-MASS 260

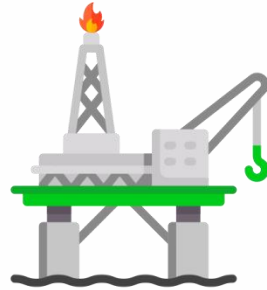
remote type



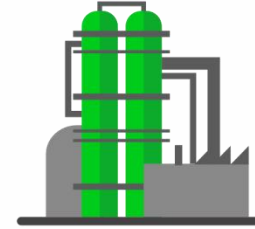
EMIS-MASS 260

hygienic type





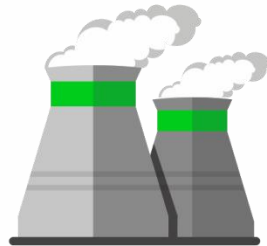
UPSTREAM OIL AND GAS INDUSTRY



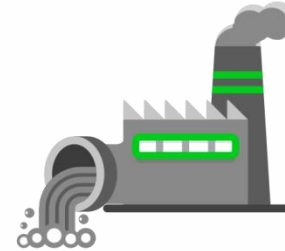
OIL REFINING INDUSTRY



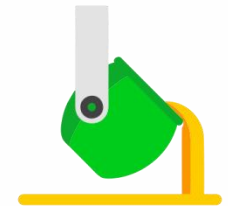
CHEMICAL INDUSTRY



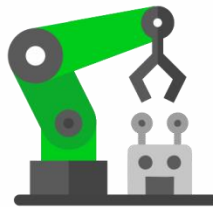
HEAT POWER ENGINEERING



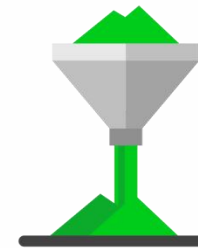
MANUFACTURING PLANTS



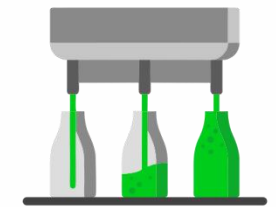
METALLURGICAL PLANTS



MECHANICAL ENGINEERING

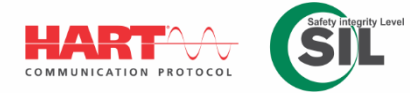


BUILDING MATERIALS
MANUFACTURING



FOOD INDUSTRY

SPECIFICATIONS



> Medium	liquids/gas
> Pipeline DN, mm	10...200
> Process pressure, MPa	up to 25
> Medium temperature, °C	-50...+200
> Ambient temperature, °C	-60...+70
> Accuracy liquid/gas, %	±0,1; ±0,15; ±0,25; ±0,5
> Output signals:	Pulse / 4-20 mA / RS-485 / Modbus / HART / Ethernet / USB / TCP-IP
> Explosion protection	1ExibIIC(T3-T4)X (sensor) 1Exd[ib]IICT6X (transmitter)
> Measuring range, t/h (liquids)	0,05 to 1000
> Enclosure protection degree (IP)	IP 67
> Verification interval, years	4



FEATURES & ADVANTAGES

- Measure high viscous mediums and liquids with abrasive and gaseous impurities up to 3%;
- Each EMIS-MASS 260 flowmeter is equipped with two Modbus register cards:
 - EMIS;
 - Adapted (similar) to ProLink (Micro Motion);
- Verified net oil computer; Mass-flowmeters have function of measuring and calculating the concentration of each substance in twin-component medium;
- Mounting dimensions in accordance E+H; Krohne; Micromotion models;
- Flange standards: EN1092-1 (DIN 2513), ASME /ANSI, GOST 12815, 33259;
- Metrological verification in reference with compact-prover and pipe-piston prover;
- EMIS software «EMIS-Integrator».

THANK YOU FOR ATTENTION!



456518, Russia, Chelyabinsk region,
Kazantsevo, 7/1 Proizvodstvennaya St.



Tel.: +7 (351) 729-99-12
Fax: +7 (351) 729-99-13



sales@emis-meter.com



www.emis-meter.com