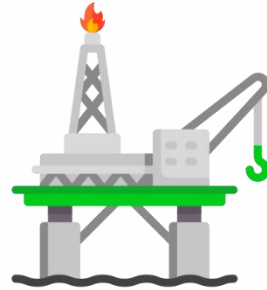




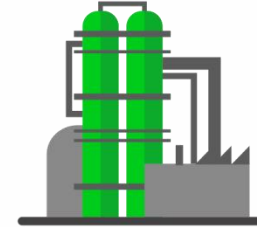
## EMIS-META 215

■ Liquids and gas flow measurement

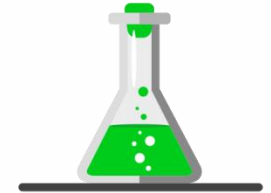
# ROTAMETERS



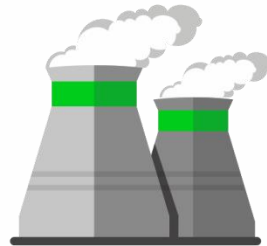
UPSTREAM OIL AND GAS INDUSTRY



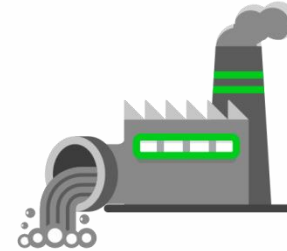
OIL REFINING INDUSTRY



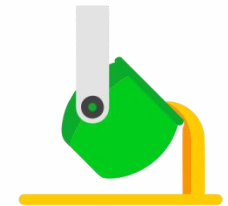
CHEMICAL INDUSTRY



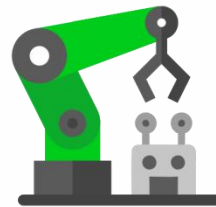
HEAT POWER ENGINEERING



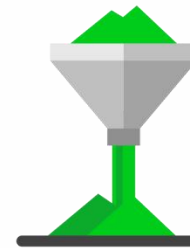
MANUFACTURING PLANTS



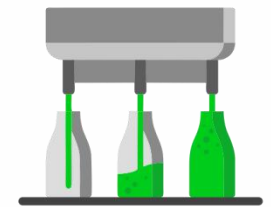
METALLURGICAL PLANTS



MECHANICAL ENGINEERING



BUILDING MATERIALS  
MANUFACTURING



FOOD INDUSTRY



**EMIS-META 215**  
explosion proof type

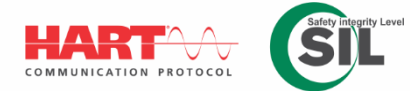


**EMIS-META 215**  
horizontal installation type



**EMIS-META 215**  
thread connection type

## SPECIFICATIONS



> Medium	liquid, gas, oxygen
> Pipeline DN, mm	15...150
> Process pressure, MPa	1,6; 4,0; 10,0; 25; 32
> Process fluid temperature, °C	-80...+250
> Ambient temperature, °C	-20...+55
> Full-scale accuracy, %	±1,5; ±2,5; ±4,0
> Output signals:	LCD display, analog current 4-20mA, HART; up to 2 limit switches
> Explosion protection	1ExibIIBT2/T4, 1ExdIIBT2/T4
> Power supply, V	24V DC
> Enclosure protection of enclosure (IP)	IP 65
> Verification interval, years	4



## FEATURES & ADVANTAGES

- Operation principle of rotameters enable to use it with any gases, liquids and steam;
- Special version with PTFE lining for corrosive mediums;
- Internal counter with optional current output for remote data transmission;
- HART 5 interface;
- Optional adjustable limit switchers;
- Easy calibration;
- Thermal jacket;
- Customized scale;
- LCD display with current flow and accumulated volume indication.



**THANK YOU FOR ATTENTION!**



456518, Russia, Chelyabinsk region,  
Kazantsevo, 7/1 Proizvodstvennaya St.



Tel.: +7 (351) 729-99-12  
Fax: +7 (351) 729-99-13



[sales@emis-meter.com](mailto:sales@emis-meter.com)



[www.emis-meter.com](http://www.emis-meter.com)