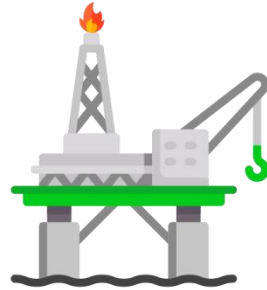




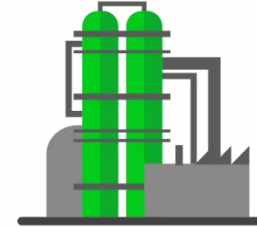
EMIS-MAG 270

Measurement of conducting liquids including contaminated and corrosive mediums.

MAGNETIC
FLOWMETER



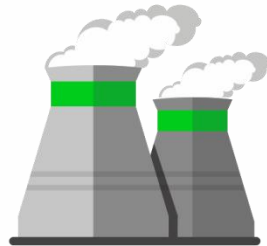
UPSTREAM OIL AND GAS INDUSTRY



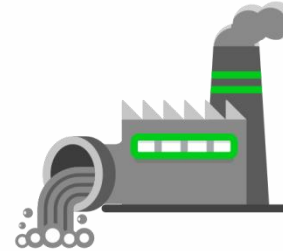
OIL REFINING INDUSTRY



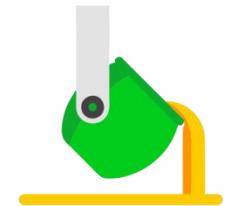
CHEMICAL INDUSTRY



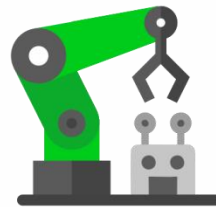
HEAT POWER ENGINEERING



MANUFACTURING PLANTS



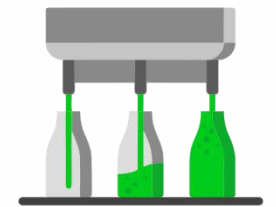
METALLURGICAL PLANTS



MECHANICAL ENGINEERING



BUILDING MATERIALS
MANUFACTURING



FOOD INDUSTRY

EMIS-MAG 270



EMIS-MAG 270
standard type



EMIS-MAG 270
mine type
of explosion proof



EMIS-MAG 270
remote type



EMIS-MAG 270
standard type
of small DN





SPECIFICATIONS

> Process medium	conducting liquid
> Pipeline DN, mm	15...450
> Process pressure, MPa	42
> Process fluid temperature, °C	-40...+130
> Ambient temperature, °C	-40...+50
> Accuracy (liquid), %	±0,5 ... ±5,0
> Output signals:	analog 4-20 mA + HART; digital Modbus RTU, frequency/pulse
> Explosion protection	1Exd[ia]IIC(T4-T6)X (intrinsically safe circuit, explosion-proof enclosure); PB ExdI X
> Power supply	24 V DC 220 V AC
> Enclosure protection of enclosure (IP)	IP 65
> Verification interval, years	4



FEATURES & ADVANTAGES

- Measurement of corrosive mediums;
- High process pressure (up to 32 Mpa).
- Wide range of lining materials and electrods!
- Capability of measuring contaminated liquids;
- Wide range of DN (maximum 450 mm);
- Measure flow rate of mediums with changing density and viscosity;
- Miner explosion protection type is available;
- Imitation-type verification.



THANK YOU FOR ATTENTION!



456518, Russia, Chelyabinsk region,
Kazantsevo, 7/1 Proizvodstvennaya St.



Tel.: +7 (351) 729-99-12
Fax: +7 (351) 729-99-13



sales@emis-meter.com



www.emis-meter.com