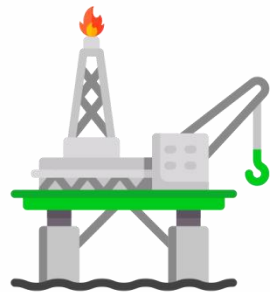




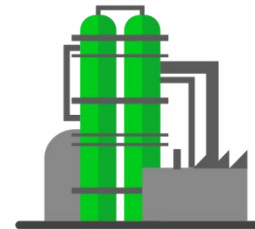
EMIS-BAR

| Pressure sensors and transmitters

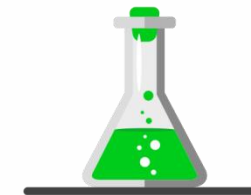
PRESSURE
TRANSMITTER



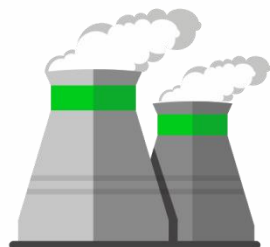
UPSTREAM OIL AND GAS INDUSTRY



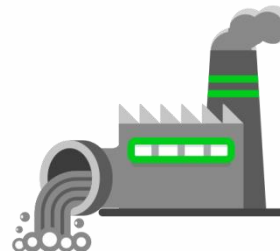
OIL REFINING INDUSTRY



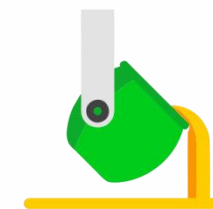
CHEMICAL INDUSTRY



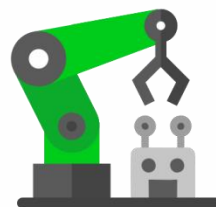
HEAT POWER ENGINEERING



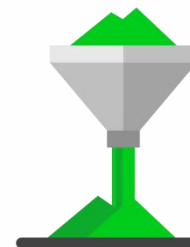
MANUFACTURING PLANTS



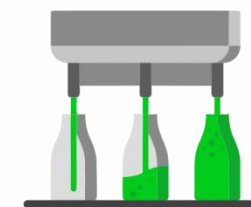
METALLURGICAL PLANTS



MECHANICAL ENGINEERING



BUILDING MATERIALS
MANUFACTURING



FOOD INDUSTRY



SPECIFICATIONS

➤ Measuring range, MPa	up to 69
➤ Accuracy, %	±0,065, (± 0,04)
➤ Reset range	100:1
➤ Process temperature, °C	-90...+400
➤ Ambient temperature, °C	-60...+85
➤ Explosion protection	0Exia IIC T6...T4 Ga, 1Exd IIC T6...T4 Gb, 1Exia d IIC T6...T4 Gb
➤ Output signals	4-20 mA + HART (with DTM and DD files)
➤ Voltage, V	10,5...45
➤ Verification interval, years	5



FEATURES & ADVANTAGES

- High accuracy of measurement that is up to the world leaders (up to $\pm 0,04\%$).
- Button adjustment (including zero calibration) for hazardous areas without violating enclosure protection.
- Extended self-diagnostic function.
- High overload resistance up to 105 MPa.
- Wide model range.
- «EMIS-Integrator» software.

THANK YOU FOR ATTENTION!



456518, Russia, Chelyabinsk region,
Kazantsevo, 7/1 Proizvodstvennaya St.



Tel.: +7 (351) 729-99-12
Fax: +7 (351) 729-99-13



sales@emis-meter.com



www.emis-meter.com